

$$b = 3 \text{ cm}$$

$$H^2 = a^2 + b^2$$

$$5^2 = 4^2 + b^2$$

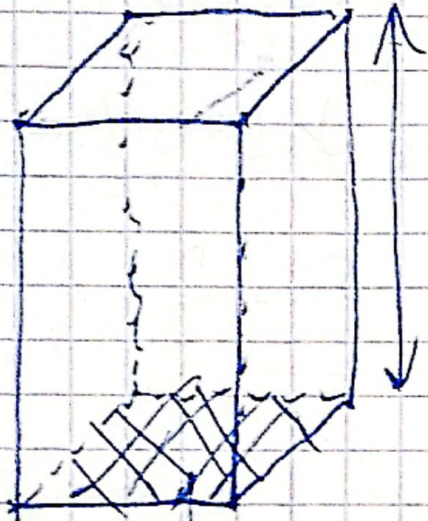
$$25 = 16 + b^2$$

$$25 - 16 = b^2$$

$$9 = b^2$$

$$b = \sqrt{9} = 3 \text{ cm}$$

FRISMAS, CILINDROS Y OTRAS FIGURAS RECTAS



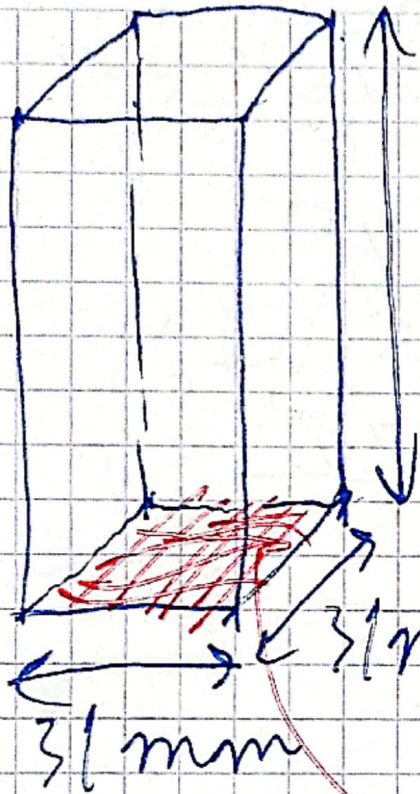
ALTURA

VOLUMEN =

(SUPERF.
BASE)

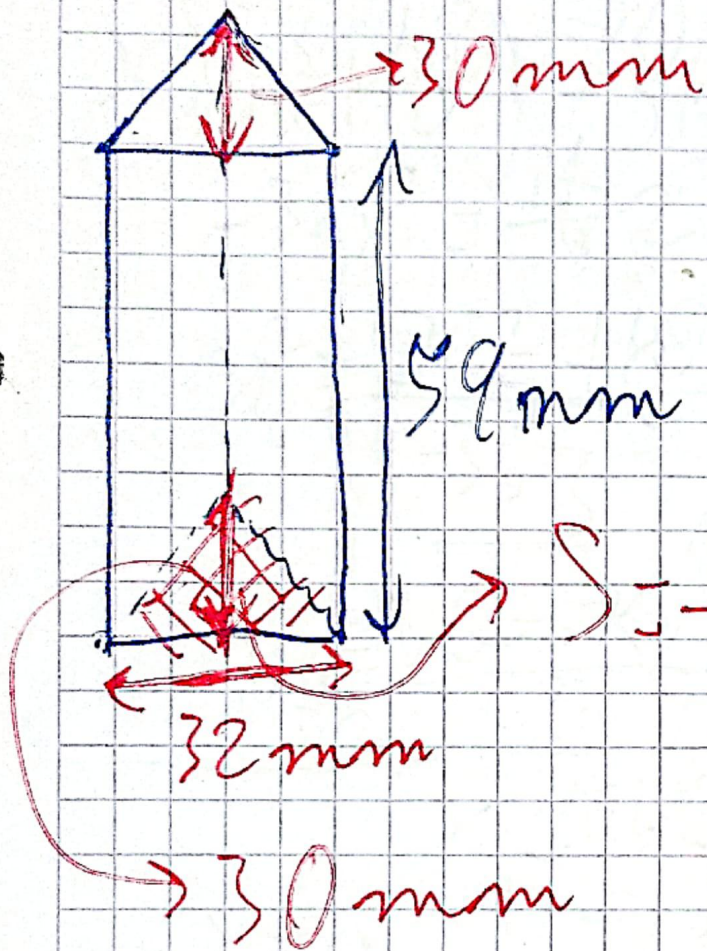
x ALTURA

→ SUPERFICIE DE
LA BASE



$$58 \text{ mm} \quad V = S \cdot a = 961 \cdot 58 = 55\,738 \text{ mm}^3$$

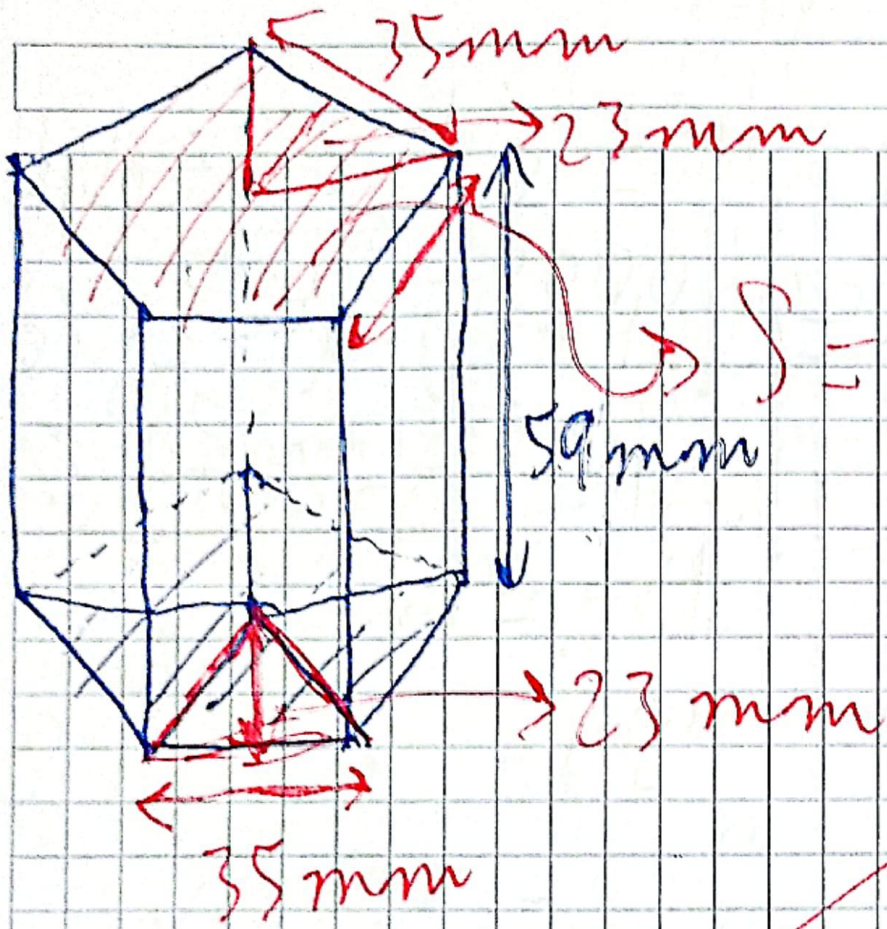
$$\rightarrow S = 31 \cdot 31 = 961 \text{ mm}^2$$



$$V = 28320 \text{ mm}^3$$

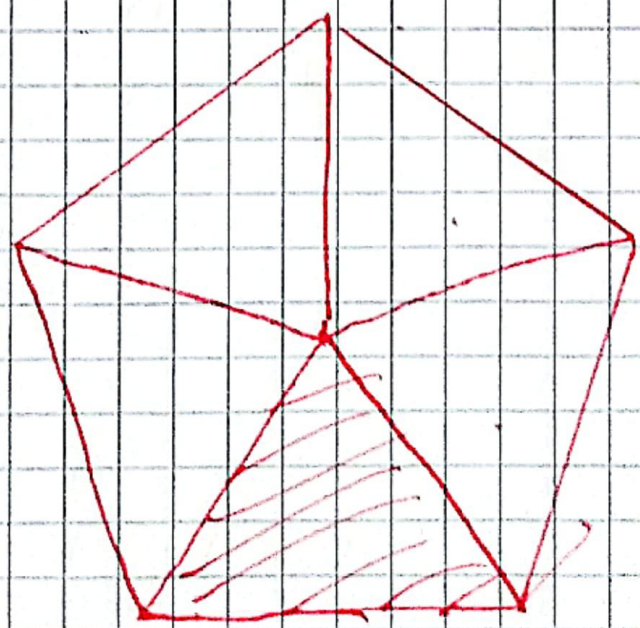
$$S = \frac{b \cdot a}{2} = 480 \text{ mm}^2$$

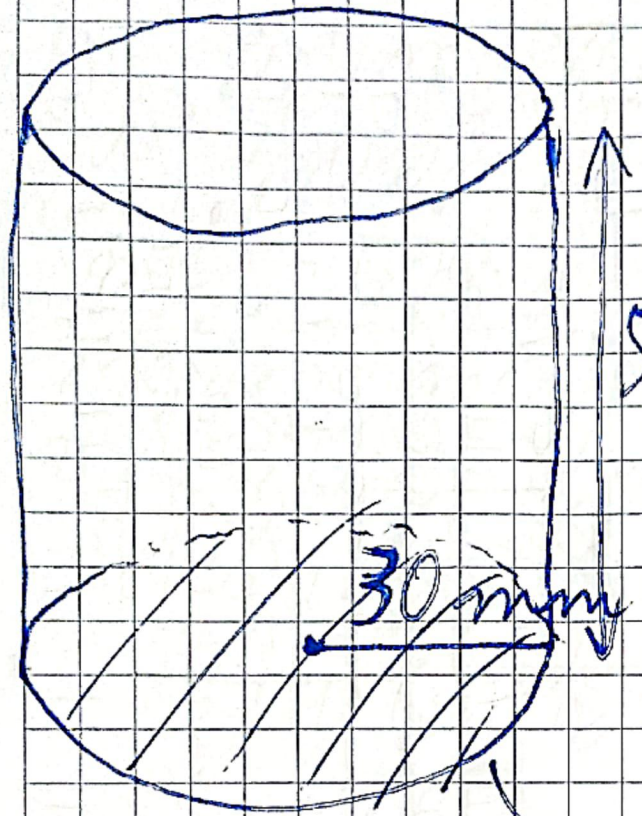
$$\frac{32 \text{ mm} \cdot 30 \text{ mm}}{2} = 480 \text{ mm}^2$$



$$S = \frac{35 \cdot 23 \cdot 5}{2} = 2012.5 \text{ mm}^2$$

$$V = 118737.5 \text{ mm}^3$$

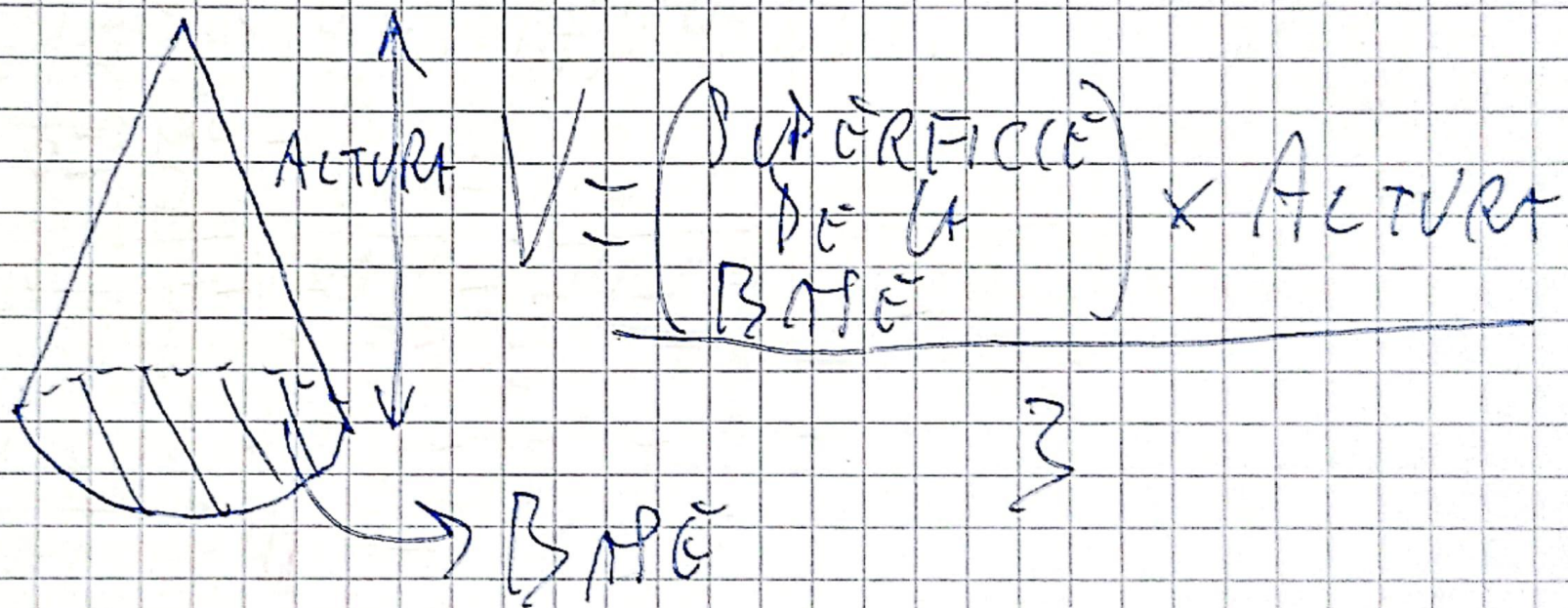


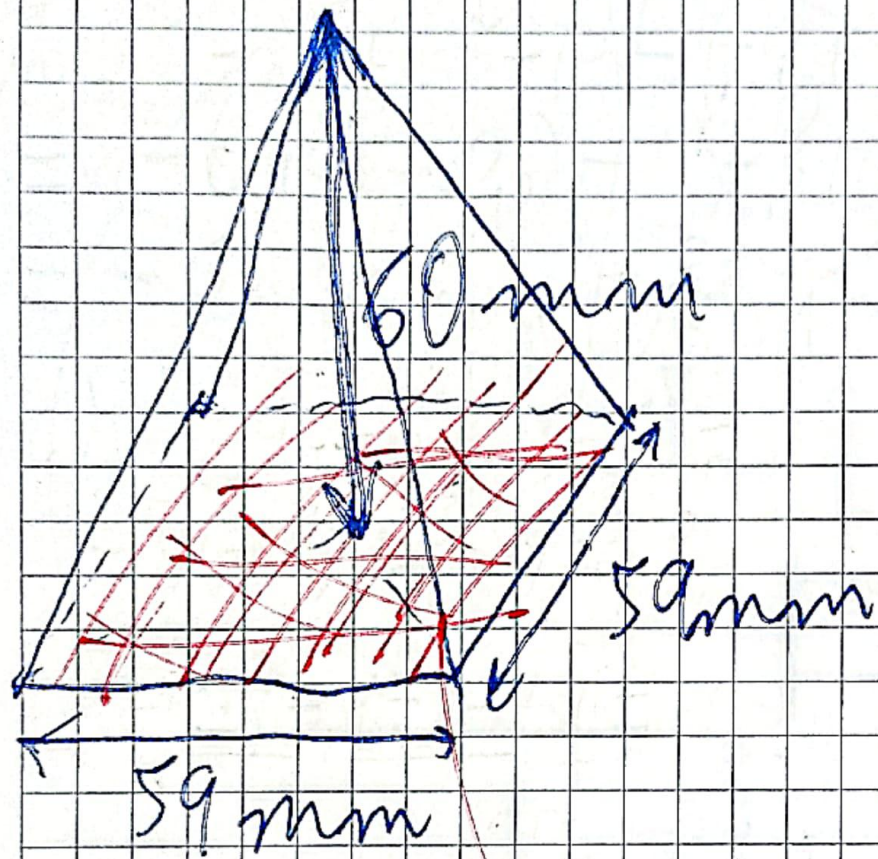


$$59 \text{ mm} \quad V = 166898,6 \text{ mm}^3$$

$$\rightarrow S = \pi \cdot r^2 = 2827,4 \text{ mm}^2$$

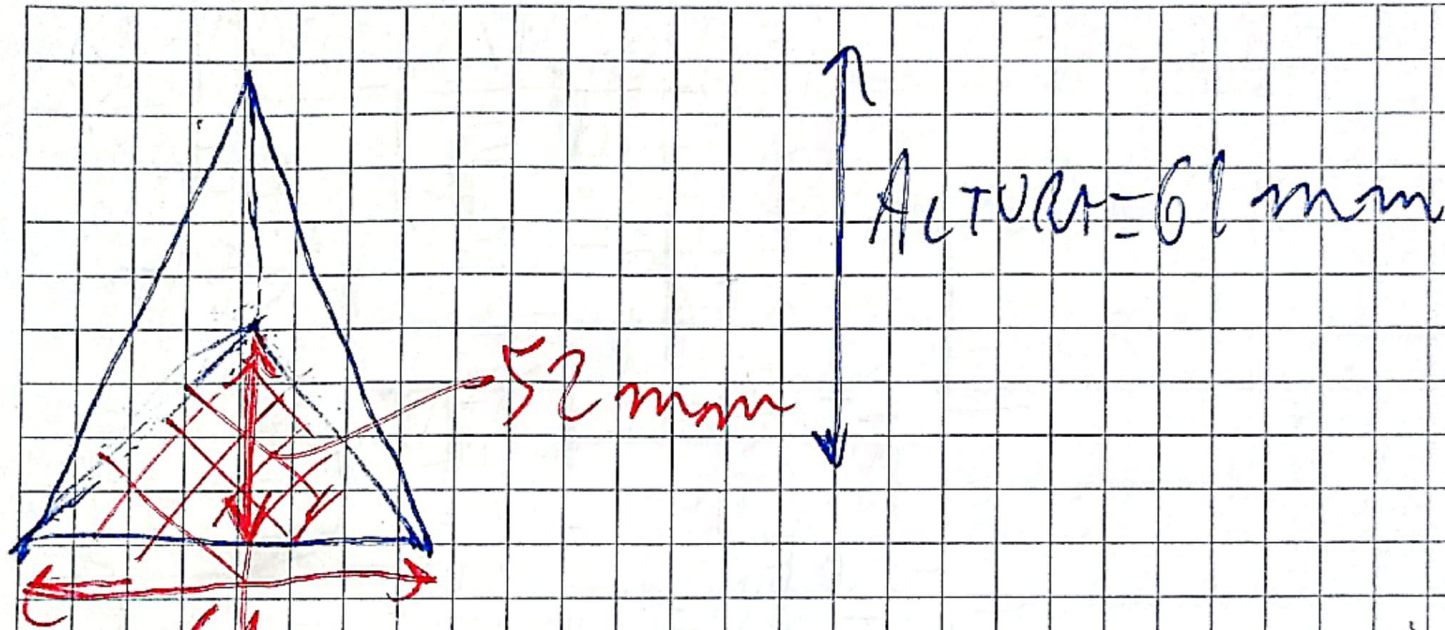
PIRÁMIDES, CONOS Y OTRAS FIGURAS QUE TERMINAN EN PUNTA





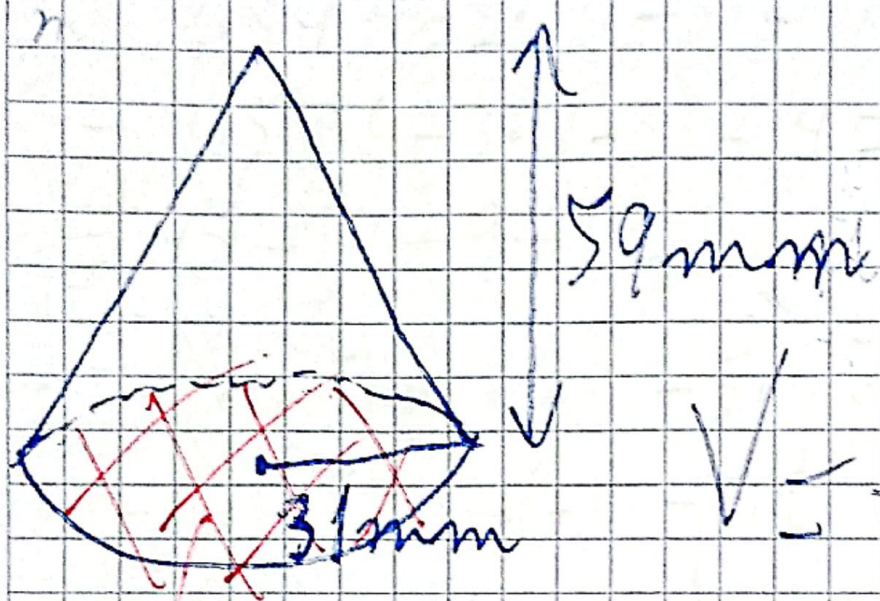
$$V = \frac{3481 \cdot 60}{3} \\ = 69620 \text{ mm}^3$$

$$\rightarrow S = 59 \cdot 59 = 3481 \text{ mm}^2$$



$$S = \frac{b \cdot a}{2} = 1586 \text{ mm}^2$$

$$V = \frac{S_{\text{BASE}} \cdot \text{ALTEURA}}{3} = \frac{1586 \cdot 61}{3} = 32298.7 \text{ mm}^3$$

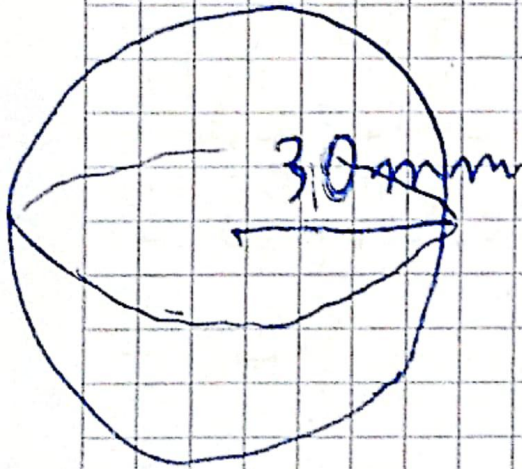
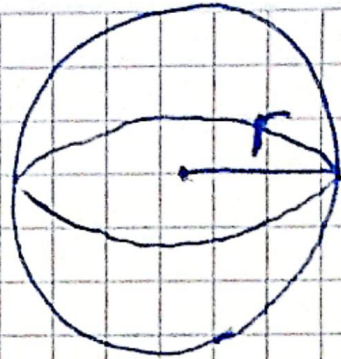


$$V = \frac{\text{STABE} \cdot \text{HÖHRE}}{3} = \frac{3019,1 \cdot 59}{3} = 59375,05 \text{ mm}^3$$

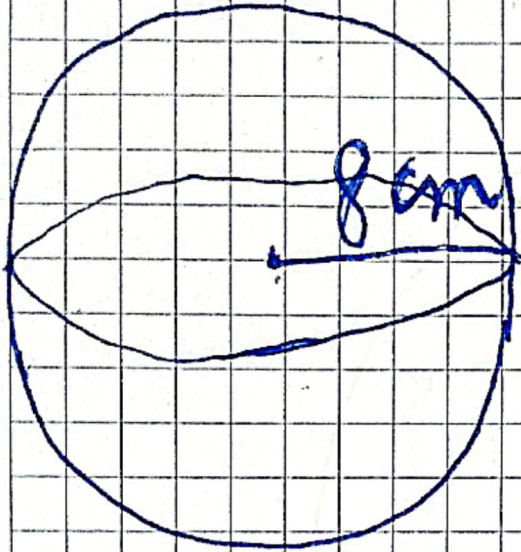
$$\rightarrow S = \pi \cdot r^2 = \pi \cdot 31^2 = 3019,1 \text{ mm}^2$$

ESFERA

$$V = \frac{4}{3} \pi \cdot r^3 = \frac{4 \cdot \pi \cdot r^3}{3}$$



$$V = 113\,097,3 \text{ mm}^3$$



$$V = \frac{4 \cdot \pi \cdot 8^3}{3} = 2144,7 \text{ cm}^3$$